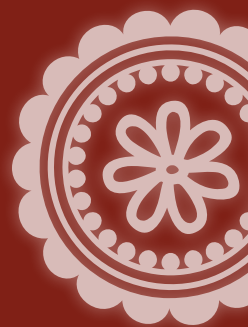
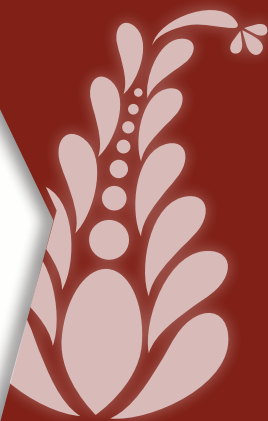
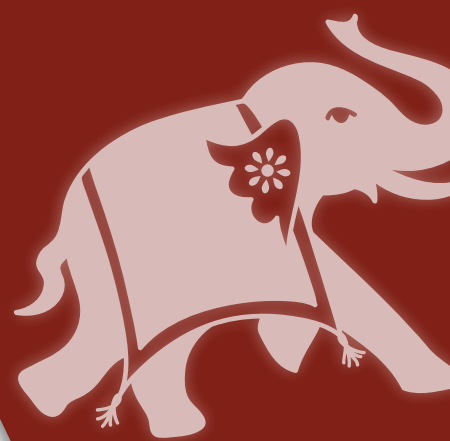


२०११
निर्देश
youth expedition

DETAILS

i2P
impossible2Possible





The Thar Desert is known for three distinct regions, *the Thar* - with Sand dunes eclipsing 150 meters, *the plains*, and *the Aravalli range* - with peaks topping 1700 meters. The i2P Youth Ambassador team will run approximately 250 kilometers in this vast expanse near the northwestern edge of India, bordering on Pakistan.



i2P MISSION & VISION

The **mission** of impossible2Possible (i2P) is to use the platform of adventure and technology to educate, inspire, and empower the global community to reach beyond their perceived limits and make positive change in the world.

The **vision** of i2P is to cultivate a generation of leaders who, through direct experience, education and the use of groundbreaking technology, are prepared to pioneer social and environmental action throughout the world.

INDIAN YOUTH EXPEDITION: थार तैल्लरत

In the fall of 2011 the impossible2Possible Youth Ambassador team will travel to Rajasthan, the largest state of the Republic of India. The 5th stage of the i2P World Expedition Series will spend 10 days running through the Thar Desert - also known as the "Great Indian Desert". It is the world's seventh largest and one of the most inhospitable deserts on the planet.

The i2P Youth Ambassador team will run approximately 300 kilometers in this vast expanse near the northwestern edge of India, bordering on Pakistan. The Thar Desert is known for three distinct regions, *the Thar* - with Sand dunes eclipsing 150 meters, *the plains*, and *the Aravalli range* - with peaks topping 1700 meters. This diverse and contrasting landscape will ensure that this i2P Youth expedition will be the toughest to date, and will require incredible preparation to ensure a successful expedition through this awe inspiring landscape.

The 2011 India Expedition will demonstrate once again why the i2P Education Resource program has been touted by Apple Distinguished Educators as truly, "21st Century learning," and "ground breaking". The i2P web-team will be utilizing streaming video during the expedition to allow students direct communication with the Youth Ambassador team as they traverse this varied and diverse eco-region.



i2P's Educational Coordinator, Dr. Ewan Affleck, will again team up with educators, scientists, and advisers to create a captivating curriculum centered on "World Health." The program will include a complete look at the impacts of modern medicine in a developing nation. The experiential learning program and accompanying resource modules have proven extremely successful for teachers and students alike.

The four i2P Youth Ambassadors will be the direct conduits of information back to thousands of students following intently from around the world. The four Youth Ambassadors will once again be the lead researchers for an experiential learning program like no other on the planet. The Exploratory Program will see students from around the globe ask questions for which the Youth Ambassadors will be tasked to find the answers.

expedition info



Join 16,000+
Students &
Follow Along
FALL 2011

vimeo



As with all i2P **Experiential Learning Programs**, Expedition India will partner with some of the best organizations and experts in relevant capacities to the “Access to Health” theme of the expedition. In the case of Expedition India i2P will partner with hospitals, health agencies, and individual experts in the field of health and wellness.

WHY HEALTH? Health and Wellness is an incredibly tangible way to involve students and participants in the Experiential Learning Program in a truly interactive and mutually beneficial Expedition. North America is facing an obesity crisis, and we want to **encourage students to be active and healthy.**

WHY INDIA? India is home to one of the world’s fastest growing economies and over a billion people - factors that greatly constrain its ability to offset deep contrasts in living standards. While India boasts some of the most advanced health facilities in the world, The Times of India estimated that nearly **one million Indians die** every year due to inadequate access to healthcare services. The massive population and great disparity in wealth accentuate most of the issues that threaten access to world health today.

PROJECTED PARTNERS*:

Hospitals:

- All India Institute of Medical Services (AIIMS);
- Jaipur Hospital; and
- Local medical clinics throughout Rajasthan and the Thar Desert.

Experts:

- Dr. Ewan Affleck - Medical Director, Yellowknife Health and Social Services; Clinical Director, Family Medicine at Stanton Territorial Hospital;
- Dr. Rahul Khosla - Emergency Medicine Specialist, Anesthetist, Certified Tropical Medicine;
- Dr. Greg Wells, Phd. Human Physiologist, Exercise Medicine Scientist, Toronto General Hospital;
- Dr. Shawn Cooper, DO, Pediatrician - Penn State Children’s Hospital.
- Multiple Apple Distinguished Educators.

Agencies:

- World Health Organization;
- Centers for Disease Control and Prevention;
- Simon Fraser University; and
- UNESCO.

*Note: This is not an exhaustive list. More partners, experts and agencies will be confirmed shortly.

“ Simply amazing; the people; the place, the adventure have all changed me in infinitely positive ways. I will now live with increased confidence, heightened respect, and a new found love and enjoyment of the great world around me.

- Amanda Cobbs-Russell
i2P Youth Ambassador
Baffin Island Expedition, 2009



EXPEDITION FEATURES

SCIENCE OF THE RUN: Greg Well's, Ph.D. will provide daily physiology testing during the expedition, to illustrate the effects of exercise on human biochemistry. Also, during the expedition Dr. Wells will lead participating schools in projects such as Body Mass Index (comparing India with North America), variation in world health costs (comparison study), and new innovations in technologies that improve access to health care.

Dr. Wells is a scientist and physiologist specializing in health and performance in extreme conditions. Most recently, Dr. Wells was the host of the Gemini Award winning "Superbodies" segments for Canada's national Olympic broadcast and the on camera sport science and sport medicine analyst for the CTV Broadcast Consortium, ABC News, and ABC's 20/20 during the 2010 Vancouver Olympics.

WEB BASED RESOURCE CENTER: impossible2Possible will provide WebMD with the complete package of educational materials, research projects, and experiments to be performed during Expedition India. WebMD will build a customized *Resource Center* tailored to the i2P content. This *Resource Center* will act as a primary landing page for participating students and the wider interested audience. This informational access tool will allow the viewing audience an increased level of interaction with the expedition, while driving brand impressions to WebMD's media platforms.



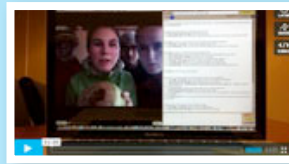
VIDEO/PHOTO JOURNALS



LIVE TRACKER



FACEBOOK/
TWITTER



LIVE VIDEO
CONFERENCING



EXTRAORDINARY
ACTS

EXPERIENCE THE EXPEDITION: A live and interactive website is the portal to every impossible2Possible Expedition! With each new project our dedicated team of volunteers works very hard to provide new and improved features. All content is free, and schools have access to all content at no charge- including live video conferencing during the i2P Expeditions. For weeks leading up to Expedition India, video, photos, social media and blogging will be updated daily. Every minute during the Expedition, Youth Ambassadors will film and photograph the Expedition from their perspective and everything they experience while on their journey.

This content is updated at least once a day (and sometimes) more on the i2P homepage, and partner sites like Outside Online and CNN will provide an update on the Expedition a handful of times during its duration.

APPLE EDUCATION: Since the early stages of i2P, Apple Distinguished Educators (ADE's) have played a key role in our Experiential Learning Programs. With their active participation and generous support everyone involved has experienced great success. For Expedition India, Apple Education and impossible2Possible have partnered in an extraordinary Challenge Based Learning project that will see participating students from around the world tackle the global issue of access to health care. The object is to see these motivated students come up with real world solutions to this real world issue.